

Facing up to the challenges of dementia

Safety Morality Food
Alcohol MOOD **Sex** Design Health
Integrity IGNORANCE Behaviour Pleasure
End-of-life **Freedom** Regulations Resolutions
Age **Autonomy**



Safety Morality Food Sex Design Health
Alcohol MOOD Behaviour Pleasure
Integrity IGNORANCE Regulation Responsibility
End-of-life Freedom Age
Autonomy

“Care and support for people with dementia is increasingly defined by our attitude to risk”

In regulatory or organizational environments which seek to avoid risk, an adverse event such as the death of a person with dementia in care can lead to a cascade of new rules and regulations that, in the desire to protect, may also deny many freedoms that people with dementia want and need.

This is not a problem isolated to Australia. Rather, it presents us with a global challenge as the number of our citizens living with dementia increases and the services available are unable to adapt and cope with their aspirations and demands.

Risky Business: Facing up to dementia will consider the future that, together, we are shaping for people with dementia.

The conference will address risk from everyone's point of view; from the risks people with dementia choose to take in their lives, to the challenges of building and delivering services that provide choice and therapeutic benefits, to the legislative and policy context that simultaneously seeks to protect and deny certain freedoms.

The conference will bring together delegates from across the globe, all with a passion to improve the lives of people with dementia.

The conference is for everyone involved in supporting people with dementia and their carers, who have a desire to make positive change happen.

As part of our International Dementia Partnership, HammondCare is delighted to host our conference with the Dementia Services Development Centre, University of Stirling, at Darling Harbour in Sydney, Australia, on 28-29 June 2012.

I look forward to welcoming you to HammondCare's biennial international dementia conference **Risky Business: Facing up to dementia**.

It will confront and challenge the journey we are shaping for people with dementia and the risks we need to face.

Dr Stephen Judd

Chief Executive, HammondCare



28-29
JUNE 2012 **Risky
Business**

INTERNATIONAL DEMENTIA CONFERENCE
DARLING HARBOUR SYDNEY

The Dementia Centre, HammondCare and Dementia Services Development Centre, University of Stirling, are delighted to work in partnership on this International Dementia Conference.

Dealing with risk is an everyday challenge to the staff who support people with dementia and their families.

This international conference will provide the platform for confronting and debating this key issue.

Drawing expertise from across the world to Darling Harbour in Sydney, leaders, academics, practitioners and carers will enjoy an absorbing program that will entertain and challenge.

We aim to provide you with a space where we can talk about what is practical and achievable.

Based on the latest research about what works and makes a difference, we hope to approach risk with a sense of responsibility, but also courage.

We need to learn from people with dementia about what they need us to do to support them on their journey.



**Professor
June Andrews**

Director of the
Dementia Services
Development Centre
University of Stirling



**Colm
Cunningham**

Director of
Australia's
Dementia Centre
HammondCare

Plenary speakers

Professor Henry Brodaty AO

Henry Brodaty is

- Scientia Professor of Ageing and Mental Health and Director of the Australian Government funded Primary Dementia Collaborative Research Centre at the University of New South Wales.
- Director, Aged Care Psychiatry and Head of the Memory Disorders Clinic at Prince of Wales Hospital in Sydney.

Professor Brodaty is President-Elect of the International Psycho-geriatric Association. He was previously chairman of Alzheimer's Disease International, and president of Alzheimer's Australia and Alzheimer's Australia (NSW).

Henry has published extensively, is on the editorial board of several journals, has received a number of awards and is a member of several key State and National Committees in Australia concerned with dementia and mental health in older people and is leading the NSW Health Dementia Policy Team which developed the 2010-2015 Plan for Dementia Services in NSW.



Diana Kerr

Diana is a Research Fellow at the Centre for Research on Families and Relationships at the University of Edinburgh. Her research focus is predominantly in the field of dementia and learning disability and dementia. Diana is an advisor to service providers and planners who support people with dementia and people with a learning disability and dementia. Diana has carried out research into supporting older people in care homes at night. This research has led to a renewed interest in night care, especially in relation to people with dementia. Diana works with night staff to develop training and improve services.

Diana has a lifelong interest and involvement with music making and has been advocating the use of music with people with dementia for many years. She is involved with the provision of musical 'get togethers' for people with dementia and their carers. Previously Diana was the Course Director for the MSc in Dementia Studies at the University of Stirling. She is the author of a number of publications on dementia and on learning disability and dementia and on the night time care of older people. Diana is a Freelance Consultant and an Associate Consultant of The Dementia Centre, HammondCare.



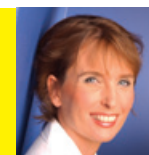
Colm Cunningham

Colm is Director of Australia's Dementia Centre, HammondCare. He is helping to establish a strong network of local and international partnerships, as well as building a team of experts who can facilitate change in our clients enabling excellence in dementia care to people in need and their families. He worked with the globally-recognised Dementia Services Development Centre based at the University of Stirling, but saw in HammondCare a wonderful opportunity to enable knowledge exchange by embedding research and education in the delivery of care. He feels privileged to be working with an organisation of that calibre. Colm has a background in nursing and social work as well as an MSc in Dementia Studies. His research interest and expertise are in design for people with dementia, pain management, dementia and delirium, dementia and learning disabilities and night care.



Dr Megan Best

Megan has been involved in medical ethics for over twenty years and completed a Master of Arts in Applied Ethics in Health Care at the Australian Catholic University in 2001. She is currently a lecturer in Medical Ethics in the Medical and Engineering Faculties at the University of New South Wales (P/T) and a fellow in the Centre for Apologetic Scholarship and Education (CASE). In 2009 she was awarded a Global Bioethics Education Initiative Grant by the Center of Bioethics and Human Dignity in Deerfield, Illinois, USA and she has just received a second grant for research in ethics at the beginning of life. Megan has written on many topics including euthanasia, advance directives, stem cells and cloning, genetics, assisted reproduction and health resource allocation and she is a popular public speaker. Megan has contributed to development of health legislation at state and federal government levels. She was a foundation member of the National Health and Medical Research Council Licensing Committee. She has acted as a consultant in bioethics to the Anglican Church in Sydney since 1998 and is a member of the Diocese's Social Issues Executive which advises the Archbishop.



Monique Wijnties

Monique Wijnties is consultant at Aedes-Actiz Expertise Centre Housing-Care a leading centre on innovations in (community based) housing and care initiated by the Dutch association for nursing homes and homecare and the Dutch organisation of housing associations.

She developed an online application providing insight in the space required for personal care which received an IAHSa Citation of Honour. The application is part of the Dutch approach to safe and healthy working conditions. Monique is also one of the authors of the book 'Design for Aging' (Wiley, 2012).



Angela Raguz

Angela is the General Manager – Residential Care for HammondCare, an independent Christian charity which is regarded as Australia's leader in dementia care both in residential and 'at home' care. In this role she oversees all HammondCare's residential aged care services, and is involved in the planning and start-up of new residential services. HammondCare currently cares for more than 700 people in our residential services across six sites in NSW. Angela supports new and existing managers so that HammondCare's philosophy of care is something that is well and uniformly understood, and is practiced daily in care delivery. It also involves ensuring Learning and Development, and Quality and Risk are integral, and maintained across HammondCare's services. Angela has worked in the aged care industry for 17 years and is a Registered Nurse. During this time she has managed both dementia-specific and general residential aged care facilities. In 2007 she completed an MBA through the Macquarie Graduate School of Management at Macquarie University, Sydney.



Dr Stephen Judd

Dr Stephen Judd is CEO of HammondCare, an independent Christian charity that seeks to improve the quality of life of people in need.

Acknowledged as one of Australia's leading providers of dementia-specific services, HammondCare provides residential and community care, palliative care, rehabilitation and psycho-geriatric care. In addition, it has a strong reputation in piloting leading edge programs, all backed by an energetic research program.

Dr Judd combines extensive management experience with a vision and passion to make a difference in the lives of those in need. He holds a strong interest in designing environments for people with dementia and the appropriate use of technology in aged care in both residential and community care. His ability to analyze and synthesize aged care issues in 21st century Australia's complex political and social climate has made him sought after on Government Ministerial committees and industry peak bodies, and he serves as a member on the Design Review Committee of the International Association of Homes and Services for the Ageing.



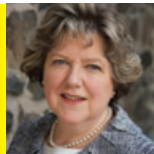
Dr Timothy Kwok

Professor Timothy Kwok had undergraduate medical education and postgraduate training in Geriatric Medicine in the United Kingdom. He joined the Department of Medicine & Therapeutics in the Chinese University of Hong Kong in 1994, and became professor in 2006. He has been director of the Hong Kong Jockey Club Centre for Positive Ageing, a comprehensive care centre for people with dementia, since 2004. He is council member of the Hong Kong Geriatrics Society and President of the Hong Kong osteoporosis foundation. His research interests include dementia, nutrition in old age, osteoporosis and health service models. He helped establish the HK\$380m CADENZA project in Hong Kong, which aims at nurturing academic leadership in gerontology and changing the mindset and attitude of the general public through a range of training and public education programmes.



Professor June Andrews

Professor June Andrews is the Director of the Dementia Services Development Centre at the University of Stirling. The DSDC provides training, education, research and information about how to improve care for people with dementia. Professor Andrews is a psychiatric and general trained nurse and previous posts include working for the government in the Health Department, being the Director of Nursing of two general hospitals, leading the Royal College of Nursing in Scotland, and working as a nurse in psychiatric and geriatric hospitals. Because the number of people with dementia increases all the time as the population ages, the need for training and education in the field increases all the time. Professor Andrews is called upon internationally by governments, local authorities, health services, the private sector and voluntary organisations to give help and advice on how to improve services. Her main emphasis is on what is practical and makes a difference.



“It's not because things are difficult that we dare not venture. It's because we dare not venture that they are difficult.”

**Seneca
Roman philosopher,
mid-1st century AD**

Day 1

07.45
Registration opens

8.45am
Welcome and opening remarks
Stephen Judd

Dementia: the global risk of inaction in
treatment and approaches to care
Henry Brodaty

Night time care: what goes wrong?
What goes right?
Diana Kerr

Morning break

Designing safe and healthy
working conditions for care
Monique Wijnties

Opening the door – the risk of
compliance
Angela Raguz

Lunch

Afternoon concurrent sessions

Details on following page

Navigating the dementia jungle
Stephen Judd

5pm
Close of Day 1

6.15pm
The IDEAs
International Dementia
Excellence Awards

**Once we believe
in ourselves,
we can risk
curiosity, wonder,
spontaneous
delight, or any
experience that
reveals the human
spirit.**

e. e. cummings

Day 1 Afternoon concurrent sessions

Session A Design and regulation

Confronting the critical challenges of fire safety in aged care facilities. Design versus regulation, function and safety. An expert speaker panel with robust discussion and debate.

A chaired session with question from the floor

Session B Care home and risk

Dementia Adventure - Connecting people living with dementia in care

Neil Mapes (ENG)
Dementia Adventure

Just one more drink - alcohol problems in older people.

Dr Alice Rota-Bartelink (AU)
Wintringham

“Behaviour management” - outmoded and outdated! Focusing on how evidence can make life better for everyone.

Meredith Gresham (AU)
HammondCare

Session C Decisions at the end of life

‘Opening Conversations’: Developing a model for the Alzheimer Society of Ireland of best practice palliative care interventions for people with dementia and their carers.

Annie Dillon (IRE)
Alzheimer Society of Ireland

The problem of moral risk, moral luck and moral safety in end-of-life, decision-making in dementia care

Professor Megan-Jane Johnston (AU)
Deakin University

Advance Care Planning, Integrated Care Pathways and ethical dilemmas in end of life dementia care

Dr David Findlay (SCO)
NHS Tayside

Session D Resilience & reducing risk

“There is a life for us, if we risk it!” Is a diagnosis of dementia a risky business?

Sally Osborne (AU)
Victoria University

Risk, resilience and dementia: How do we understand resilience in the context of a person with dementia and what are the implications for practice

Julie Christie (SCO)
University of Stirling

Ignorance is Risk - The prevalence and impact of a non-diagnosis of dementia

Michael Darragh (CN)
General's Garden

Session E Risk of change

Key issues of managing change

Professor June Andrews (SCO)

This concurrent provides an opportunity to engage directly on the key issues of change management. Professor June Andrews is a leader in supporting change across a range of care systems

Day 2

8am

Registration opens

8.45am

Welcome and opening remarks

Design...a bitter pill to swallow
Colm Cunningham

Dementia – What happens to autonomy
Megan Best

**Behaviours of concern –
the risks & challenges for doctors**
Timothy Kwok

Morning break

**Morning
concurrent sessions**

12.50pm

Lunch

**Running the risk of failure –
Health care**
June Andrews

Afternoon concurrent sessions
Details on following page

4.15pm

Drinks

5.15pm

Close

Day 2 Morning concurrent sessions

Session A

Governance and risk

**The Risk Monster: Reducing the risk as
harm.**

Professor Wendy Moyle (AU)
Griffith University

**Riskman - An integrated risk management
database in aged care, an organization's
experience.**

Stuart Thorne and members of care team (AU)
Hammondcare

Session B Intellectual disabilities and dementia

Supporting people with a learning disability and dementia: What is needed?
Diana Kerr (SCO)

This concurrent provides an opportunity to engage directly on the key issues of Intellectual disabilities and dementia and will include the video 'Supporting Derek'

Session D Care Plan Assessment Tool

JCPAT & CPAT
An Australian and Japanese perspective on reducing risk in an intelligent and measured way. An effective decision making tool for care recipients and strategic planning in aged care
Dr Sumiko Kanegae (JP)
Hiramatsu Lady's Clinic &
Rejane LeGrange (AU)
HammondCare

Session F Designing for freedom or security

How colour symbolizes equality, embraces diversity, promotes communication, reduces risk, encourages safety and nurtures harmony within the built environment
Pamela Topping (NIR)
University of Ulster

Reducing risk through environmental design in acute hospital wards
June Delaney (SCO)
Wester Moffat Hospital

The false security of handrails in residential aged care facilities
Lenore de la Perelle (AU)
ACH group

Session C Younger people with dementia

Are we listening? Using the consumer voice to improve service provision for younger people with dementia
Dr Adrienne Withall (AU)
UNSW

Younger people with dementia: the challenges, the lessons and meeting their needs
Danielle McIntosh (AU)
HammondCare

Younger people with dementia: understanding the story of survival
Professor Victoria Traynor (AU)
University of Wollongong

Session E Supporting carer to care

'From the heart'
A carer's perspective
Family carers of love ones with dementia
Training eldercare workers in dementia care
Dr Gwen-Li Sin (SG)
Singapore General Hospital

Community care options are evolving; why are residential care options so restrictive?
Christine Atkins (AU)
Anglicare – Chesalon services

“Only those who will risk going too far can possibly find out how far one can go.”

T S Eliot

Day 2 Afternoon concurrent sessions

Session A Breaking tradition in hospital care

Dementia care in general hospitals: challenges, risks & opportunities

Dr Sridhar Vaitheswaran (SCO)
NHS Grampian

“She is my mum, not the woman in bay 13”. How personal experience influenced a service’s approach to our clients being admitted to public hospital.

Louise Jones (AU)
Amana Living

Cognition Care Support Team; Improving health outcomes for older people with cognitive impairment in the acute care setting

Kelly Burns (AU)
Penninsula Health

Session B No sex please – I’m not allowed

Sex... that’s not on the menu!

Katryna Harman (AU)
Specialist Mental Health Service for Older People, Hunter New England Health Service

“Well, that’s the way it has to be... I’m not to behave differently...” Expression of sexual needs and behaviour before and after dementia

Dr Cindy Jones (AU)
Griffith Health Institute - Research Centre for Clinical and Community Practice Innovation

Maintaining identity: a proactive approach to differing sexual preferences

Elaine White (AU)
Registered Nurse & Educator

Session C Recruiting the right people for risk

Growing the aged care sandpit
Peter Birkett (AU)
Hesse Rural Health

“You’ve neglected us” – respecting the choices of our clients and the wellbeing of our care workers

Sally Yule (AU)
HammondCare

The right staff for person-centred care: How do you know you are selecting the best?

Bernie McCarthy (AU)
McCarthy Psychology Services

Session D The pleasure of eating

Food safety: Balancing quality of life and risk

Chris Poulos (AU)
UNSW

“Engaging with the experience.”

An interactive session on cooking and the person with dementia

Peter Morgan-Jones (AU)
Executive Chef
HammondCare

Session E At Home support

Telehealth and telecare in support of people with dementia and their carers

Dr Stella Clark (SCO)
NHS 24

The secret life of people with dementia
Ellen Bragger (AU)
Just checking Ltd

After hours – risk & rescue. An after hours approach to care.

Bev Allen, Kim Coady and the care team (AU)
HammondCare

4.15pm

Drink reception and closing discussion

Event highlights

Over the two days, this conference will challenge and engage discussion and debate on critical issues of aged care risk. Here are some additional special events presented to ensure that you can get the most out of your conference experience. We will keep you informed and updated of further details for these events through our website www.dementiaconference.com and our social media platforms.

Lunchtime events

Debate: 'Absconding' – freedom's 'acceptable risk', or just poor care?

Experts from various disciplines explore and debate this issue from legal, ethical, spiritual and care perspectives. Challenge your thinking!

Design consultations

This is the 'must do' event for anyone contemplating or planning a facility for people with the dementia. Filled with great ideas and useful tips, these consultations will cover the price of your conference ticket. Presented by leaders in the field, bring your questions or proposals and get the feedback you need to take that next step.

For your pleasure

Cooking and eating exposed in fine style to delight the senses. "I'll have what she's having." If you have a taste for things 'naughty or nice', then treat yourself to this delectable offering, you will not be disappointed.

Dementia and the media, the risk of not being heard!

This session will look at some of the challenges and mistakes when seeking to share important messages about good practice and services

"Are you sitting comfortably?"

Postural care planning and seating for people with dementia and compromised posture.
Juliet Kelly, HammondCare (AU)

Meeting the spiritual needs of the person with dementia

An interactive discussion about the challenges of meeting the spiritual needs of the person with dementia

Book signings

This is your big chance to get a copy of the latest and best resources on dementia. From best sellers to best practice, it is all here, and at a great affordable price. Several authors will be available to sign copies or just chat with you about the publications.

Exhibitors

Connecting you with the innovations, technologies and the people to propel your services.

The exhibition has been growing steadily over the years and should prove to be the largest ever, giving delegates a fantastic opportunity to source information about a wide range of products and services being delivered to the industry. Everything you need, under the one roof!

We have partnered with the exhibitors to provide delegates with a 'passport to prize' opportunity.

Details of our fantastic prizes and how to enter will be provided in the delegates program.

CNE Points

This conference has been endorsed by the Royal College of Nursing, Australia, according to approved criteria, and attendance attracts 8 RCNA Continuing Nurse Education (CNE) points per full day, as part of RCNA's Life Long Learning Program (3LP).



Services

Internet café

We will have our internet café available to assist you in staying in touch with work during the conference

Relaxation room

For delegates with dementia there will be designated serviced lounge room to allow you to plan and pace the conference sessions to suit your needs.

Additional event

At the end of day two we invite you to a closing drinks reception. We will reflect on some of the key issues brought out through the conference, as well as allowing us a final chance for networking, catch-up and farewells with colleagues old and new. This event is included in the delegate rate.

New! The I.D.E.A.s come to Australia for the first time!

International Dementia Excellence Awards 2012

28 June 2012, Sydney Convention and Exhibition Centre Darling Harbour, Sydney, Australia. Time: 6.15pm - 8.15pm

Note: The cost is NOT included with registration. Cost will be \$90.00 for delegates and \$150 for Non delegates. Please note places are limited, so please book early!

The International Dementia Excellence Awards are designed to recognise organisations and individuals who have worked to improve the quality of life of people with dementia.

The awards celebrate the important work being undertaken to support people with dementia internationally and are a celebration of innovation and good practice.

We are delighted to host these for the first time in Australia.

This drink and canapés event will celebrate the best in dementia care with awards under the following categories:

1. Dementia and the Arts
2. Life Engagement
3. Employee of the year
4. Team of the Year
5. Researchers
6. Dementia Design Innovation of the Year
7. Volunteer of the Year
8. Risky Business

How to enter.

Nominations are invited which reflect both small and large-scale activities that have made a difference to the lives of people with dementia.

The awards are international and a wide range of individuals and organisations are encouraged to enter.

Please note that the eligibility criteria vary for each award.

Further details can be found in the conditions of entry section on our website:

www.ideawards2012.com

Venue information

With its spectacular waterfront location and world-class facilities, the Sydney Convention and Exhibition Centre is Australia's leading venue for conferences, exhibitions and special events.

The Centre is situated in the heart of Darling Harbour, home to a variety of entertainment, dining, transport and accommodation options. Easily accessible by monorail, taxi, coach, ferry and light rail, the Centre is only a 10 minute walk from the central business district and a 20 minute drive from Sydney Airport.

The Exhibition Centre car park is conveniently located off Darling Drive, underneath the Centre's five exhibition halls. The car park has direct access to the venue and the many attractions and facilities available in Darling Harbour

Conference enquiries/ contacts

Registration and general enquiries should be directed to Michelle Andrew:

Email: conference@hammond.com.au

Tel + 61 (0) 2 8788 3081

Fax + 61 (0) 2 9475 4979

Travel and accommodation

For accommodation and travel arrangements we recommend that you contact:

The Lido Group

Tel 1800 817 339 (within Australia)

Tel + 61 (0) 2 8585 0808 (International calls)

Fax + 61 (0) 2 8585 0802

Email exhibitions@lido.com.au

Web www.lido.com.au



You can also access the accommodation booking site from www.dementiaconference.com

Registration fees

Category	Early Bird Fee	Full Rate
	Available until 30 March 2012 <small>(all GST inclusive)</small>	Available from 31 March 2012 <small>(all GST inclusive)</small>
Delegate Full Conference 2 days: 28th & 29th June	\$815.00	\$875.00
Delegate Full Conf 1 day	\$408.00	\$438.00
	1 Day Rate	2 Day Rate
Student <small>Proof of fulltime enrolment is required. Numbers are limited.</small>	\$395.00	\$656.00
Concurrent speakers	\$328.00	\$656.00
People with dementia and carer rate per person. <small>Numbers are limited. Please contact conference enquiries to register.</small>	\$100.00	\$200.00
International Dementia Excellence Awards – delegate rate		\$90.00
International Dementia Excellence Awards – non delegate rate		\$150.00

Inclusions

Full conference: Attendance at all conference sessions, entry to exhibition, conference bag & materials, participant list, name badge, teas and lunches for 2 days. Day 2 end of conference drinks event is also included.

Day registration: Attendance at all conference sessions, entry to exhibition, teas and lunch for selected day, conference bag and materials, participant list and name badge.

Cancellation Policy: Registration cancellations will not be accepted unless made in writing by email to the conference managers at conference@hammond.com.au. Cancellations received in writing on or before 1st June will be subjected to a refund less 25%.

No registration refunds will be made after this date for any reason. As an alternative to cancellation, your registration may be transferred to another person in your organization.

Details of transfers/substitutes must be notified to the Registration Managers no later than 8th June, 2008. Please note that by completing a registration form, you are accepting the terms and conditions as laid out in this brochure, and the cancellation policy will apply whether or not payment has been received.

Disclaimer

The speakers, topics and times are correct at the time of publishing and, in the event of unforeseen circumstances, the organisers reserve the right to alter or delete items from the Conference program.

Registration fees DO NOT include travel insurance. We recommend delegates arrange personal and travel insurance.

Legend for countries

- AU Australia
- CN China
- JP Japan
- ENG England
- HK Hong Kong
- IRE Ireland
- NL Netherlands
- SCO Scotland
- SG Singapore
- NIR Northern Ireland

“What you risk reveals what you value”

Jeanette Winterson

**“There are risks and costs to a program of action.
But they are far less than the long-range risks and
costs of comfortable inaction.”**

John F. Kennedy

“Life is a risk.”

Diane Von Furstenberg

**“Take calculated risks.
That is quite different from being rash.”**

George S. Patton

“Bite off more more than you can chew, then chew it.”

Ella Williams

**“Either you decide to stay in the shallow end
of the pool or you go out in the ocean.”**

Christopher Reeve



A Brighter Future for People Living with Dementia

Join an international panel of research academics and local care workers as they share their passion for improving the lives of people living with dementia. Hear the latest evidence-based research & best practices condensed into an inspiring 2-day program.

International Dementia Excellence Awards

Celebrate with peers at a special evening ceremony as Australia hosts the IDEAs for the very first time.

Innovative Products from 40+ Exhibitors

Source new products and services from a wide-selection of exhibitors who inspire us to deliver greater care.

Registration opens

09.01.2012

Early Bird ends

30.03.2012

Information & Registration

www.dementiaconference.com



Dementia Services
Development Centre



HammondCare
An independent Christian charity

T H E I N T E R N A T I O N A L D E M E N T I A P A R T N E R S H I P



Official publication

Australian Ageing
MAGAZINE